



GUILDCREST ESTATES



216 Linksfield Road
Westgate-On-Sea CT8 8HL





GUILDCREST ESTATES

**Linksfield Road
Westgate-On-Sea, CT8 8HL
Offers in excess of
£300,000**

Welcome to this charming semi-detached house on Linksfield Road in the coastal and picturesque Westgate-On-Sea. This modern property boasts a delightful blend of comfort and style, perfect for those seeking a peaceful retreat.

Upon entering, you are greeted by a cosy reception room, ideal for relaxing or entertaining guests, there is also a modern fitted kitchen and then three inviting bedrooms, there is ample space for a growing family or visiting friends. The addition of a conservatory allows for a bright and airy space to enjoy the views over the open fields that surround the property which you can see from pretty much all of the rooms in the house.

The convenience of a downstairs cloakroom adds a practical touch to this lovely home, while the well-maintained bathroom ensures comfort for all residents. The property also features a good-sized private garden, perfect for enjoying outdoor activities or simply

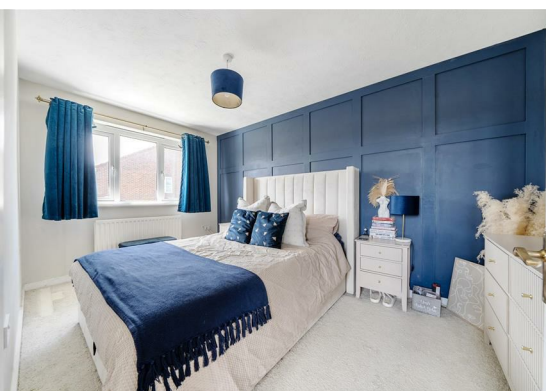




basking in the tranquillity of the surroundings.

Situated close to local schools, this house offers a prime location for families with children. Whether you're looking to settle down or seeking a peaceful getaway, this property on Linksfield Road presents a wonderful opportunity to embrace a relaxed lifestyle in a beautiful setting.

Council Tax Band C
Freehold
Mains Water, sewer, electricity, gas with
gas central heating
Fixed wireless broadband



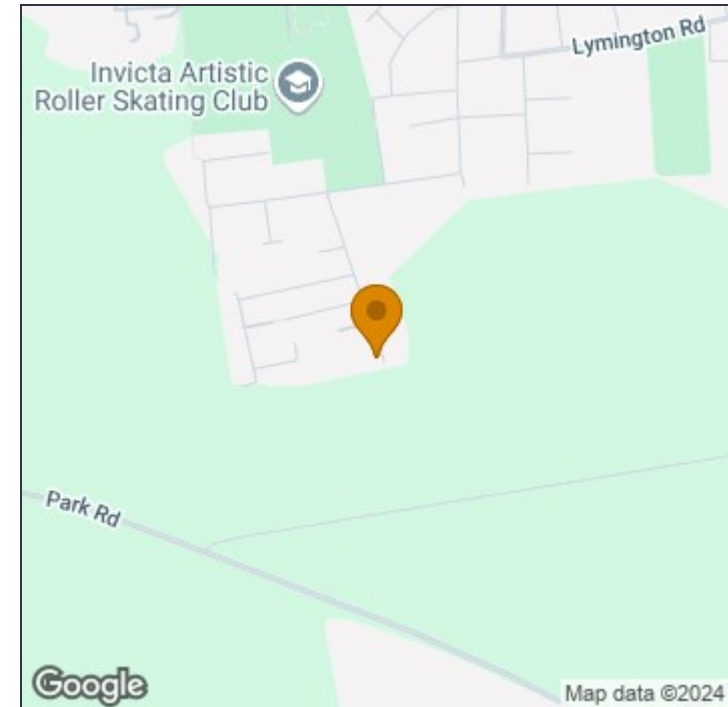
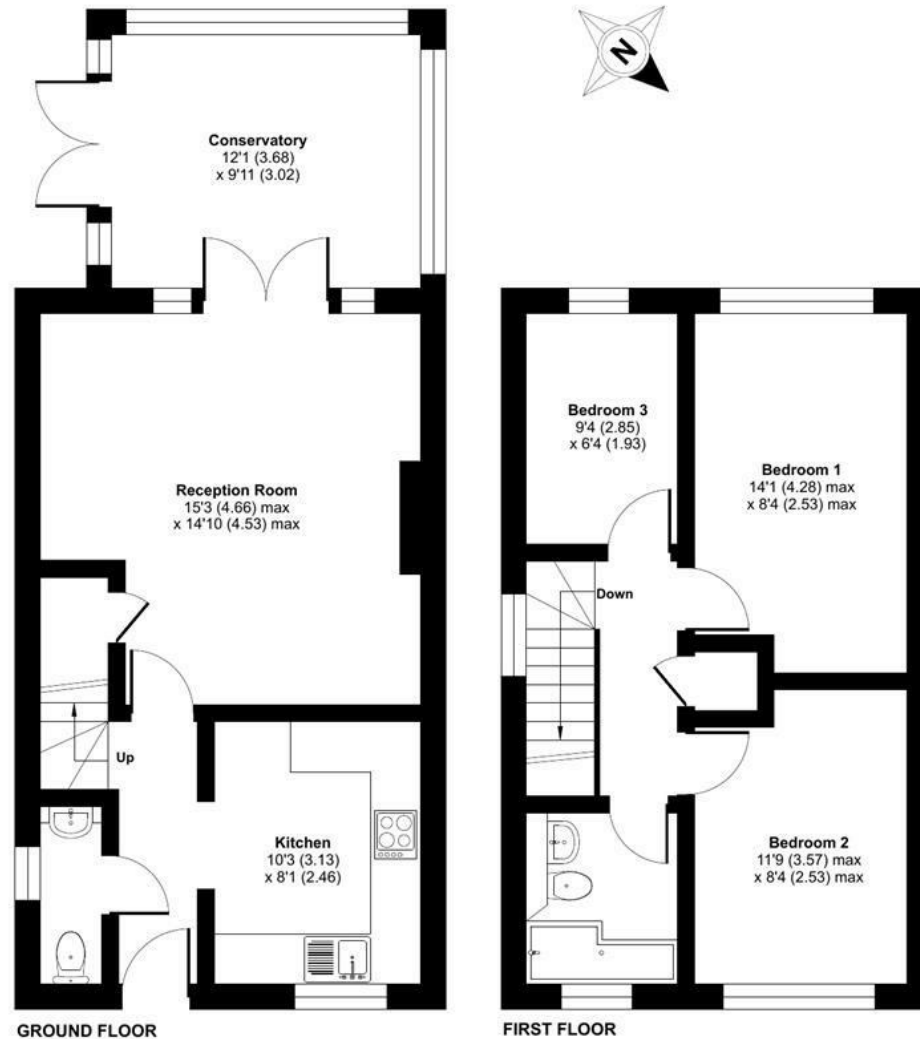
Linksfield Road, Westgate-on-Sea, CT8

Approximate Area = 911 sq ft / 84.6 sq m

For identification only - Not to scale



GUILDCREST ESTATES



Disclaimer

These particulars, whilst believed to be accurate are set out as a general outline only for guidance and do not constitute any part of an offer or contract. Intending purchasers should not rely on them as statements of representation of fact, but must satisfy themselves by inspection or otherwise as to their accuracy. No person in this firm's employment has the authority to make or give any representation or warranty in respect of the property.



Floor plan produced in accordance with RICS Property Measurement Standards incorporating International Property Measurement Standards (IPMS2 Residential). © nichecom 2024. Produced for Guildcrest Estates Ltd. REF: 1187839.

Manston

1 The Laurels Manston Business Park, Ramsgate,
Kent, CT12 5NQ

T: 01843 272 200

sales@guildcrestestates.co.uk

<https://www.guildcrestestates.co.uk>